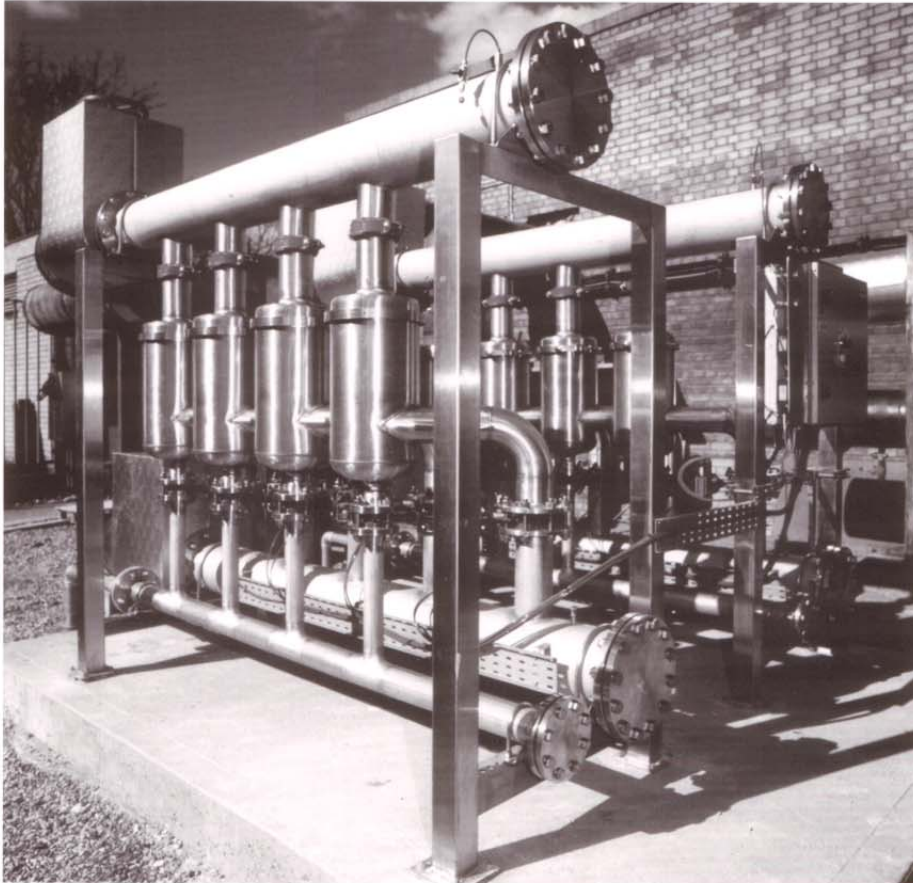




System 2000

High Performance Liquid Filters



Typical installation of two 4-pod banks with 8" manifolds and flanged ends

- No limit to flow rate
- Fully expandable, modular design
- State of art PLC control
- Turbo action for economical backwash
- No interruption to system flow during backwash
- 100% clean with every backwash
- All stainless steel construction
- Absolute filtration from 12 to 400 microns
- Pneumatic valve operation
- Hazardous environment option

The System 2000 is an expandable filtration system made up of any number of filter pods to provide an economical solution to heavy duty filtration problems.

Developed with experience from arduous operating conditions, the System 2000 offers all the benefits of zero gravity filtration in a fully automatic, adaptable and efficient filter package

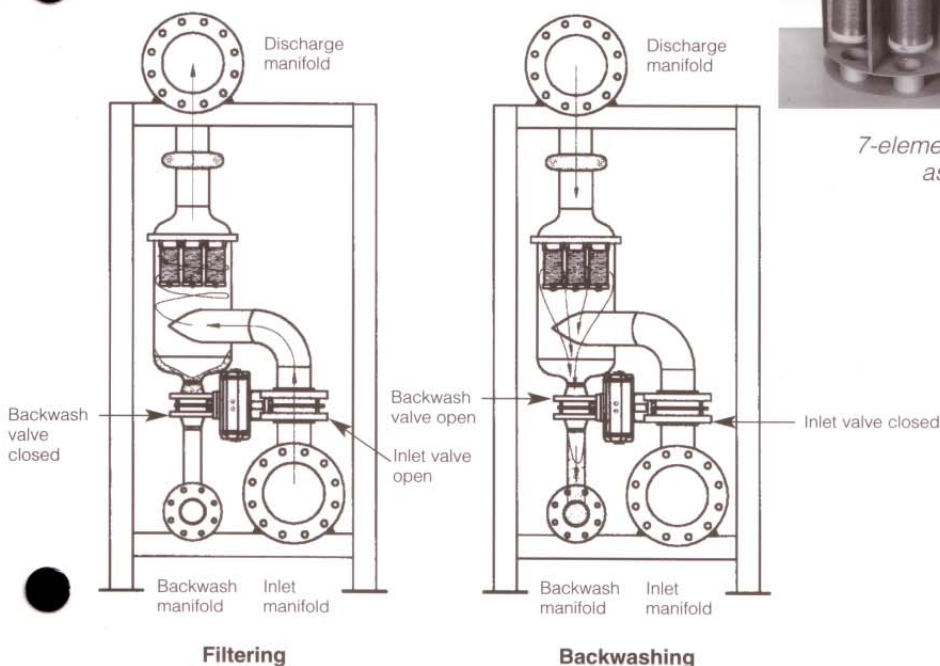
Each stainless steel pod incorporates a turbo action design and houses seven Cross filter elements in its cage.

To meet the requirements of any large filtration project, the specified number of pods is connected between inlet and discharge manifolds to form a bank. Any number of banks can be coupled together in series or parallel.

How it works

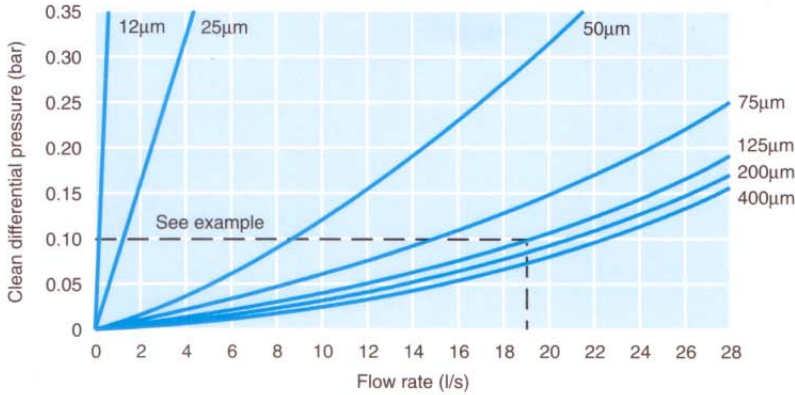


7-element cage assembly



Single pod valve and actuator assembly

System 2000 – Single Pod Performance



Example: Total system flow rate = 190 l/s; permissible pressure drop = 0.1 bar. Each pod will handle 19 l/s, therefore 10 pods are required.

Specification

Materials

<i>Filter Coil</i>	Stainless steel 304 to aircraft quality DTD 734
<i>Filter Cage</i>	Glass filled polypropylene
<i>Filter Body</i>	Stainless steel 304L
<i>Frame</i>	Stainless steel 304L
<i>Valve Assembly</i>	Cast aluminium body EPDM seat with stainless steel disc
<i>Seals</i>	EPDM, Nitrile
<i>Control panel</i>	Coated steel IP65

Connections

<i>Inlet/outlet</i>	Victaulic or PN16 flange 6", 8", 10" or 12" diameter
<i>Backwash</i>	3" Victaulic or PN16 flange
<i>Air Line</i>	6 mm push-in bulkhead fitting on panel

Electrical Supply

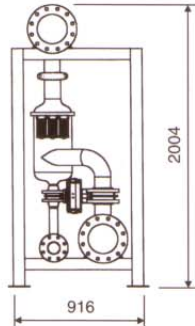
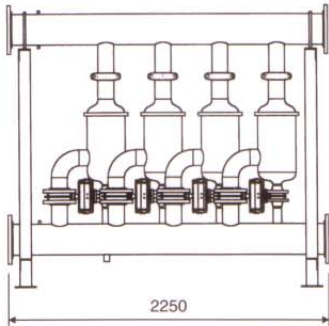
110/240 Vac 3A

Output Signal to BMS

24 Vdc 1000 mA max

Dimensions

As the nature of the System 2000 is modular, weights and dimensions vary according to customer requirement. Please call us on the number below for specific sizing information or refer to diagram below for weights and dimensions of a typical 4-pod 8" manifold bank.



Dry weight: 322 kg
Wet weight: 631 kg

100% Cleaning with Every Backwash



Filtering

Backwashing

The zero gravity coil design enables filter elements to be completely cleaned with every backwash, minimising backwash frequency and water consumption.

Filtration Ratings

Filter elements are available in seven different micron ratings: 12, 25, 50, 75, 125, 200 and 400 and are completely interchangeable. In some heavily contaminated systems, it may be advantageous to install a set of coarse or 'commissioning' elements in the early stages of the filter operation and replace them with finer elements at a later stage once the backwash frequency has stabilised.



Cross Manufacturing Company (1938) Ltd

Midford Road
Bath BA2 5RR
England

Tel: 01225 837000
Fax: 01225 834115
Email: mail@crossmanufacturing.com
Web Site: www.crossmanufacturing.com

The design of Cross Filters is subject to modification or change without notice.

Distributed by:

